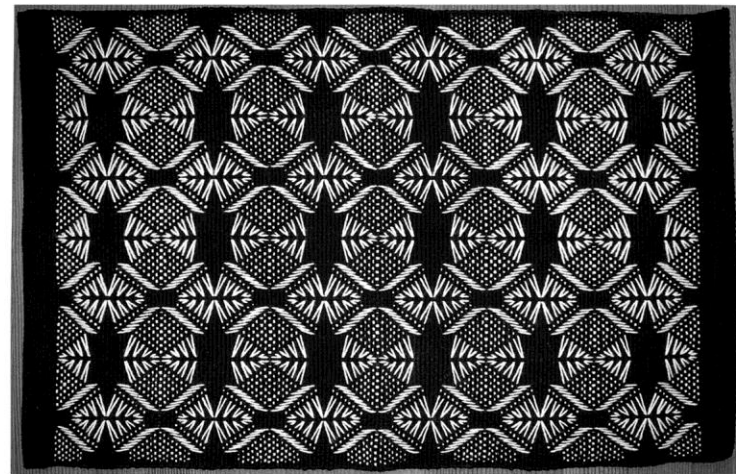
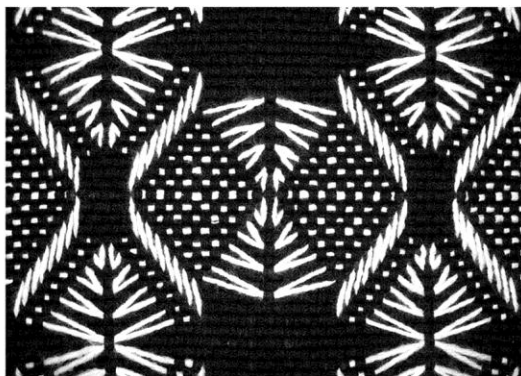
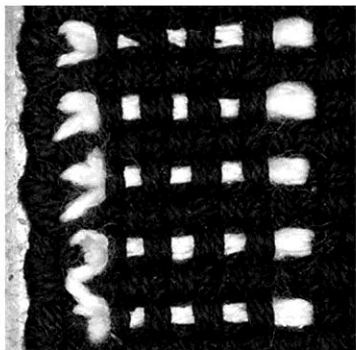


Thread Lengths - all rows use 2.5 lengths of thread. A length of thread is a piece of thread/yarn equal to the width of the fabric you are working on, so 2.5 lengths is a piece of thread/yarn that is two and a half times the width of the fabric you are weaving on. Swedish Weave / Huck Embroidery can be done on most any even weave fabric. Creating a design is done by running your needle and thread under the “floats”, the vertical threads in your fabric. The bottom center of the pattern is indicated by the arrow on the pattern. Starting at the arrow, run the needle and thread through the center or closest to the center float until you have half the thread on either side of the float. Working from right to left, do the left half of the pattern first, then turn the fabric over and do the remaining portion of the row. When you get to the end of a row, tuck the thread/yarn to the back and run through about 5 floats. Turn the needle and going over the last float, run the thread/yarn back through the floats to secure them. Clip the thread/yarn end close to the fabric. Continue stitching, following the chart, completing just one section or as many as you’d like to create your design.

To do this pattern on Monk’s cloth to make an afghan, 4-ply or sport weight yarn that is not 100% wool is suitable. To do this design on huck toweling or on Aida cloth, pearl cotton #5 or #8 works best. A #20 or #22 tapestry needle is best for Aida or huck toweling, and a #13 needle, a bodkin or a Susan Bates 5” needle are suitable for Monk’s Cloth.

This pattern can be done as a single section using rows 1 - 16 once, or to cover a larger area, you can “stack the pattern”. After doing rows 1 - 16, repeat the pattern, making sure rows 1 and 16 use the same floats for the straight stitches(see photo close-up).

Interested in more patterns from this designer?  
Visit our website: [www.swedishweavedesigns.com](http://www.swedishweavedesigns.com)



## BROKEN ARROW

This pattern may be used free of charge and may be photo copied and distributed, courtesy of Swedish Weave Designs. For further information, please email [katherine@swedishweavedesigns.com](mailto:katherine@swedishweavedesigns.com) or call 952-470-1201. Copyright 2007, Katherine Kennedy